

# 20CM FAN / VENTILATOR



WITHOUT COMPROMISE

## PRODUCT INFORMATION

The VF-UB20XX is a hazardous area blower with a totally enclosed motor which is ATEX and IECEx certified for safe use in a variety of potentially explosive atmospheres.

### FEATURES

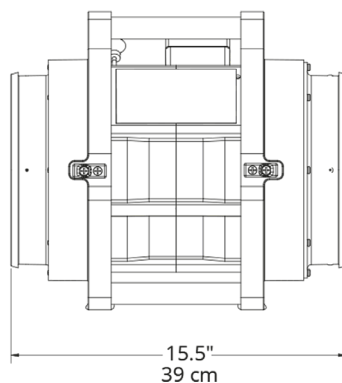
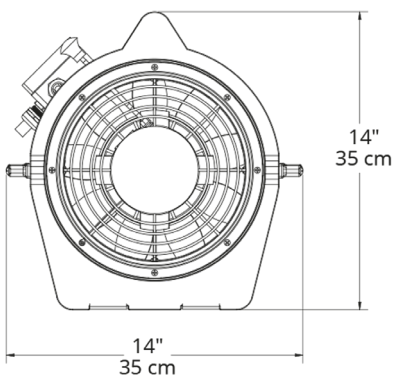
- Compact and light weight - 12kg
- Tough and resistant to chemicals
- Supplied with a 7.6m long power cable
- Operates at an ultra-quiet level of 74dB at one metre
- quick and easy setup
- Available with either a 4.6 or 7.6 metre duct
- At up to 980 cfm (1,666 m<sup>3</sup>/hr) it delivers the highest airflow in its class.
- IP55 rain switch enclosure
- Starter secured in flameproof motor enclosure to prevent risk of ignition when powered on
- Durable, PC/ABS anti-static casing - weatherproof, dent resistant, v0 flame retardant and chemical resistant
- Flexible, anti-static ducting available



20cm UB20XX Hazardous Area Fan / Ventilator

### CABLE LENGTHS

Model	25' / 7.6m	50' / 15.2m	100' / 30.4m
UB20xx 115V	16 AWG / 1.5 mm <sup>2</sup>		
UB20xx 230V	14 AWG / 2.5 mm <sup>2</sup>		
		14 AWG / 2.5 mm <sup>2</sup>	
			14 AWG / 2.5 mm <sup>2</sup>
EFi75xx 115V	14 AWG / 2.5 mm <sup>2</sup>		
		14 AWG / 2.5 mm <sup>2</sup>	
			12 AWG / 4 mm <sup>2</sup>
EFi75xx 230V	14 AWG / 2.5 mm <sup>2</sup>		
		14 AWG / 2.5 mm <sup>2</sup>	
			14 AWG / 2.5 mm <sup>2</sup>
EFi50xx 115V	14 AWG / 2.5 mm <sup>2</sup>		
		14 AWG / 2.5 mm <sup>2</sup>	
			12AWG / 4 mm <sup>2</sup>
EFi50xx 230V	14 AWG / 2.5 mm <sup>2</sup>		
		14 AWG / 2.5 mm <sup>2</sup>	
			12AWG / 4 mm <sup>2</sup>
EFi120xx	14 AWG / 2.5 mm <sup>2</sup>		
		14 AWG / 2.5 mm <sup>2</sup>	
			14 AWG / 2.5 mm <sup>2</sup>
EFi150xx 115V	14 AWG / 2.5 mm <sup>2</sup>		
		12 AWG / 4 mm <sup>2</sup>	
			DO NOT RECOMMEND
EFi150xx 230V	14 AWG / 2.5 mm <sup>2</sup>		
		14 AWG / 2.5 mm <sup>2</sup>	
			12AWG / 4 mm <sup>2</sup>



# TECHNICAL INFORMATION

20CM FAN / VENTILTOR		
PRODUCT REFERENCE	VF-UB20 (115V)	VF-UB20/230
PRODUCT DESCRIPTION	20cm Hazardous Area Fan / Ventilator	
CODE	II 2G Ex db eb IIB T6 Gb II 2 G Ex h IIB T6 Gb	
TYPE OF PROTECTION	'd' flameproof 'e' increased safety 'h' non-electrical equipment	
AREA OF CLASS (GAS)	Zones 1 and 2, Gas Groups IIA and IIB	
MAX SURFACE TEMP (GAS)	T6	
AMBIENT TEMP. (GAS)	-20°C TO +40°C	
CERTIFICATE	DEMKO 09 ATEX 0926969X IECEX UL 13.0062X	
ENCLOSURE	Anti-static PolycarbonateABS Alloy	
MOTOR	0.33 Hp (0.25kW)	
VOLTAGE	115V 50/60Hz	230V 50/60Hz
AMPS (START/RUN)	7A / 2.3A	7A / 1.2A
	<b>AIRFLOW</b>	
FREE AIR THROUGH DUCT	980cfm (1,666 m <sup>3</sup> /hr)	816 cfm (1,386m <sup>3</sup> /hr)
15'4.6M /W ONE 90° TURN:	980 cfm (1,666m <sup>3</sup> /hr)	816 cfm (1,386m <sup>3</sup> /hr)
15'4.6M /W TWO 90° TURN:	666 cfm (1,132m <sup>3</sup> /hr)	558 cfm (948m <sup>3</sup> /hr)
25'7.6M /W ONE 90° TURN:	722 cfm (1,227m <sup>3</sup> /hr)	603 cfm (1,025m <sup>3</sup> /hr)
25'7.6M /W TWO 90° TURN	614 cfm (1,044m <sup>3</sup> /hr)	510 cfm (867m <sup>3</sup> /hr)
INGRESS PROTECTION	IP55	
DIMENSIONS (H/W/D)	35 x 35 x 39 cm	
WEIGHT	12kg	
DUCT ADAPTERS	2	
NOISE	74db @ 1m	

All information has been gathered under laboratory conditions, the user must regard the values given as approximate. Changes may be made to the above specification without notification, details are available on request.



Wolf Safety Lamp Company  
Saxon Road Works, Sheffield S8 0YA, UK

T: +44 (0) 114 255 1051  
E: [info@wolfsafety.com](mailto:info@wolfsafety.com)

